

ELOPEMENT

*The Henry Clay*

E ♥ L

The Henry Clay makes for the perfect destination for a weekend-long celebration with your friends and family. Steal the Wedding spotlight by booking a non-traditional Elopement or Pop-Up Wedding and create an experience your guests will remember. We have partnered up with The Hilton Garden Inn + 8UP to offer you the ultimate complete package



[WWW.THEHENRYCLAY.COM](http://WWW.THEHENRYCLAY.COM)

502.992.3131

604 S 3<sup>RD</sup> ST.  
LOUISVILLE, KY 40202

# The Henry Clay

## ELOPEMENT

### Rental Package

*(Available Sunday through Thursday)*

Patio \$250 Billiards \$400.00 Tavern Room \$150.00

Both to include: Gold Chiavari Chairs, Hospitality Suite (2) hour Venue Access

**The Run Away:** The perfect package for Bride + Groom plus 2

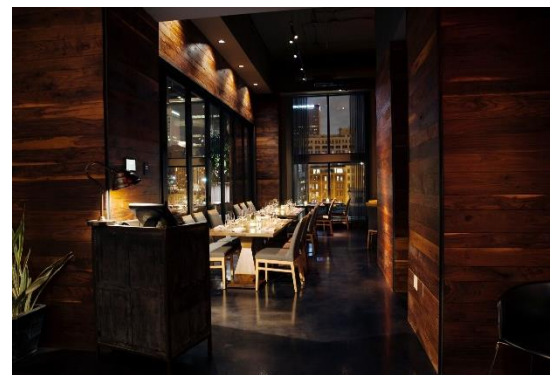
- + Intimate Ceremony on The Henry Clay Patio
- + Dinner for 2 at 8UP – Reservations and special dining + Champagne Toast
- + Suite and overnight stay at Hilton Garden Inn

**The Family Plan:** Family size and style, Perfect for a gathering of 10-15 people

- + Ceremony: Patio (rain contingency plan included),
- + Reception: Cocktail style Reception at 8UP Garden Room

**Family + Friends :** 20-30 of the best groupies to gather together for your moment!

- + Ceremony: Billiards or Patio (your choice)
- + Cocktail Hour: Tavern Room
- + Reception: Private Dining Room at 8UP



[WWW.THEHENRYCLAY.COM](http://WWW.THEHENRYCLAY.COM)

502.992.3131

604 S 3<sup>RD</sup> ST.  
LOUISVILLE, KY 40202



Seated Dinner \$60/person

*App:*

House Made Pimento Cheese Hushpuppy; *Jalapeno Jam*

*Salad:*

Caesar Salad; *Croutons, Parmesan*

*Entrée Choice:*

Wood-Fire Chicken Half; *Wild Mushroom Risotto, Jus*  
Braised Short Rib; *Weisenberger Smoked Grits, Red Wine*

*Dessert:*

*Family style dessert platter with mini portions of our most popular seasonal dessert*

*Beverage:*

*Iced Tea, Soft Drinks, Select Beer & House Wine (2-Hour)*

Reception \$40/person

*App: (1-Hour)*

Meatballs; *Peppadew Peppers, Parmesan*  
Fried Calamari; *Jalapeno Peppers, Miso Aioli*  
Pimento Cheese Hushpuppy; *Jalapeno Jam*

Bourbon Pecan Pie Bites

Peanut Butter Cream; *Chocolate Cup*

*Beverage:*

*Iced Tea, Soft Drinks, Select Beer & House Wine (2-Hour)*

Things to Know...

*Menu items are subject to availability and seasonality*  
*A 23% Service Charge will be added to final bill*  
*Upgrades are available upon request*

*Please contact Liz Percival at [liz@ctrxhs.com](mailto:liz@ctrxhs.com) for details regarding food and beverage minimum requirements for private room and restaurant buyout.*

# Hotel Accommodations

## The Hilton Garden Inn Downtown

Serving as a Henry Clay partner, The Hilton Garden Inn is a unique boutique hotel housing Louisville's only roof top bar and restaurant 8UP

Offering direct connection to our event space there is no better way to offer full service and convenience for your family and friends.

Sunday Rates as low as \$99.00 per night

Contact Rebecca Marks Social Sales Director  
For wedding pricing and booking information

*Rebecca Marks, Sales Manager*

Hilton Garden Inn Louisville Downtown  
350 West Chestnut Street | Louisville, KY 40202  
Hotel: [\(502\) 584-5175](tel:5025845175) | Cell: [\(502\) 807-7353](tel:5028077353) | Fax: [\(502\) 584-5176](tel:5025845176)  
Email: [rmarks@fhginc.com](mailto:rmarks@fhginc.com) | Web: [LouisvilleDowntown.HGI.com](http://LouisvilleDowntown.HGI.com)